



HEAT STRESS HANDBOOK

SOLUTIONS, SUPPORT AND OUR COMPLETE HEAT STRESS LINE-UP



SWEET RELIEF FOR THE HOT AND BOTHERED

WHEN THE HEAT HITS THE STREETS AND YOUR BLOOD STARTS TO BOIL, CONSIDER US YOUR ROADSIDE OASIS ON THE HIGHWAY TO HELL.

OK, bad news first. The heat stress risk is way worse than you thought.

There's the record (per BLS): heat exposure causes 1,000s of injuries and about 40 deaths on the job every year.

And there's the reality (per OSHA): "Occupational heat-related illnesses, injuries, and fatalities may be underestimated".

"Underestimated"? Here's an example. An analysis of more than 11 million workers' compensation injury reports in California from 2001 through 2018 found that working on days with hotter temperatures likely caused about 20,000 injuries and illnesses per year in that state ALONE. That's 300 times the annual injuries and illnesses California OSHA (Cal/OSHA) attributes to heat. Three. Hundred. Times. No typo. Three-zero-zero.

So what gives?

Well, here's a biggie: folks much smarter than us have proven time and time again that heat melts away the brain's ability to do brain things at peak capacity. Reduced cognitive and physical functioning from the heat leads to recordables under another name . . . like, say, a "slip, trip or fall". Meanwhile, the true instigator keeps a clean record. That heat stress is a real stinker.

Now for the good news: safeguarding your crew is as straightforward as it gets.

And while imitators have come and gone over the decades, nobody continues to bring more sweet relief solutions and expertise to the hot and bothered masses than the heat stress safety pioneers (that's us).



TABLE OF CONTENTS

THE KING OF COOL PG. 3-4

WATER. REST. SHADE. PG. 5-6
THE BASICS AS PRESCRIBED BY OSHA

HYDRATION PACKS, COOLERS +
WATER BOTTLES PG. 7-8

JOBSITE FANS + SUNSCREEN PG. 9-10

PORTABLE WORK SHELTERS PG. 11-14

COOLING PPE PG. 15-16
GO BEYOND WATER, REST & SHADE
WITH CRITICAL BODY COOLING GEAR

SHIRTS + SLEEVES PG. 17-18

COOLING VESTS PG. 19-20

COOLING TOWELS PG. 21-22

COOLING HATS PG. 23-24

COOLING HEADBANDS + BANDANAS PG. 25-26

COOLING MULTI-BANDS + GAITERS PG. 27-28

COOLING HARD HAT ACCESSORIES PG. 29-30

HEAT STRESS ILLNESS + INJURIES PG. 31-32
RISING TEMPS, RISING RISK

HEAT STRESS STANDARDS PG. 33-34
REGULATIONS ARE RAMPING UP

WHY ERGODYNE? PG. 35-36
ENHANCE YOUR HEAT-SEEKING
CAPABILITIES

THE KING OF COOL

By proclamation of the noble patrons of the worksite realm, let it be known far and wide: others may dabble, but we, purveyors of the finest protective gear in all the land, have ascended to the throne with a heat stress selection that reigns supreme.

**PRINT'S NOT DEAD,
IT'S JUST A LIL' PUTZY.**
CHECK OUT ERGODYNE.COM FOR
UP-TO-THE-NANOSECOND UPDATES ON
OUR FULL LINE OF COOLING WORK GEAR

HYDRATION PACKS, COOLERS + WATER BOTTLES



JOBSITE FANS



SUNSCREEN



PORTABLE WORK SHELTERS



SHIRTS + SLEEVES



COOLING VESTS



COOLING TOWELS



COOLING HATS



COOLING HEADBANDS + BANDANAS



COOLING MULTI-BANDS + GAITERS



COOLING HARD HAT ACCESSORIES



WATER. REST. SHADE.

THE BASICS AS PRESCRIBED BY OSHA

From OSHA's mouth to your ears. These three words have long been the agency's straightforward prescription for safety in the swelter.



WATER

Workers must have access to fresh, pure and suitably cool water at all times for all employees, which means the water needs to be cooler than ambient air.



REST

More frequent and shorter periods of heat exposure are better than fewer, longer exposures. New employees and those returning from long absences should be especially mindful of work to rest ratio.



SHADE

Workers in high heat conditions need a place that will block the direct sunlight and gives them a place to rest, get hydrated, and keep cool.



WHAT'S YOUR RESPONSIBILITY?

By law, employers are responsible for providing workplaces free of known safety hazards, including extreme heat.

IT IS YOUR RESPONSIBILITY TO:

- ✓ Provide workers with water, rest and shade.
- ✓ Allow new or returning workers to gradually increase workloads and take more frequent breaks during the first week of work as they build a tolerance for working in the heat.
- ✓ Plan for emergencies and train workers on prevention.
- ✓ Monitor workers for signs of illness.



HYDRATION PACKS, COOLERS + WATER BOTTLES

Industrial coolers, hydration packs and water bottles for a convenient source of cool, clean refreshment that encourages crews to keep on chuggin'. Save the gin and juice for after the whistle blows—chug-a-lug on good old-fashioned H2O all day to live long and prosper.



5171
INDUSTRIAL HARD SIDED COOLER - 48 QUART

HOLDS 72 CANS // 40 WATER BOTTLES

CAN BE USED AS A STOOL - SUPPORTS UP TO 300 LBS // 136.1KG

EXTERIOR BOTTLE OPENER

DESIGNED TO ACCEPT KLEIN ACCESSORIES. EASILY ADD A LIGHT OR SPEAKER. SOLD SEPARATELY.



5170
INDUSTRIAL HARD SIDED COOLER - 17 QUART

JOBSITE COOLER PALLET PROGRAM
SAVE UP TO 20%

DESCRIPTION	UNITS PER PALLET
5170 17qt. Jobsite Cooler	30
5171 48qt. Jobsite Cooler	20

5151
BPA-FREE WATER BOTTLE - 34OZ

5152
INSULATED STAINLESS STEEL WATER BOTTLE - 25OZ

3775S//3775L
CAN/BOTTLE HOLDER + TRAP

5159
HYDRATION PACK BLADDER CLEANING KIT

5160
HYDRATION PACK KIT

5052
HYDRATION PACK BLADDER

5054
HYDRATION HAND PUMP

SPRAY TIP

STREAM TIP

TWO-WAY VALVE FOR FINE MIST OR PRESSURIZED STREAM

COMPATIBLE WITH 5/16" INSIDE DIAMETER TUBING

5053
MOUTHPIECE REPLACEMENT

JOBSITE FANS

Rechargeable, portable and powerful. Chill-Its® Jobsite Fans put a hit of sweet relief right where you need it with 360° swivel action, multiple speeds and versatile mounting options...ahhhh...feel that? Glorious. So whether summer's laying it on thick or you're sweating it out in an attic turned hot yoga studio, you can rejoice and rejuvenate with every revolution. Stay breezy, baby.



RUNTIME
LOW: 12HRS
HIGH: 5HRS

ROTATING HEAD

6090
RECHARGEABLE
PORTABLE JOBSITE FAN



SUNSCREEN

Life may be a beach, but your workday? Far from it. You need full-throttle sunscreen formulated and tested to withstand the daily grind. So slather up with KREW'D®, the no BS SPF made to save your precious hide from the relentless blast of cancer-causing UV rays without all the frills, fragrances and fanciful beauty counter bunk—No stink. No drip. No bull.



6351
SPF 50 SUNSCREEN LOTION
- 8OZ



6352
SPF 50 SUNSCREEN LOTION
- 1.5OZ



6353
SPF 50 SUNSCREEN SPRAY
- 5.5OZ



6355
SPF 50 SUNSCREEN LOTION
- 32OZ

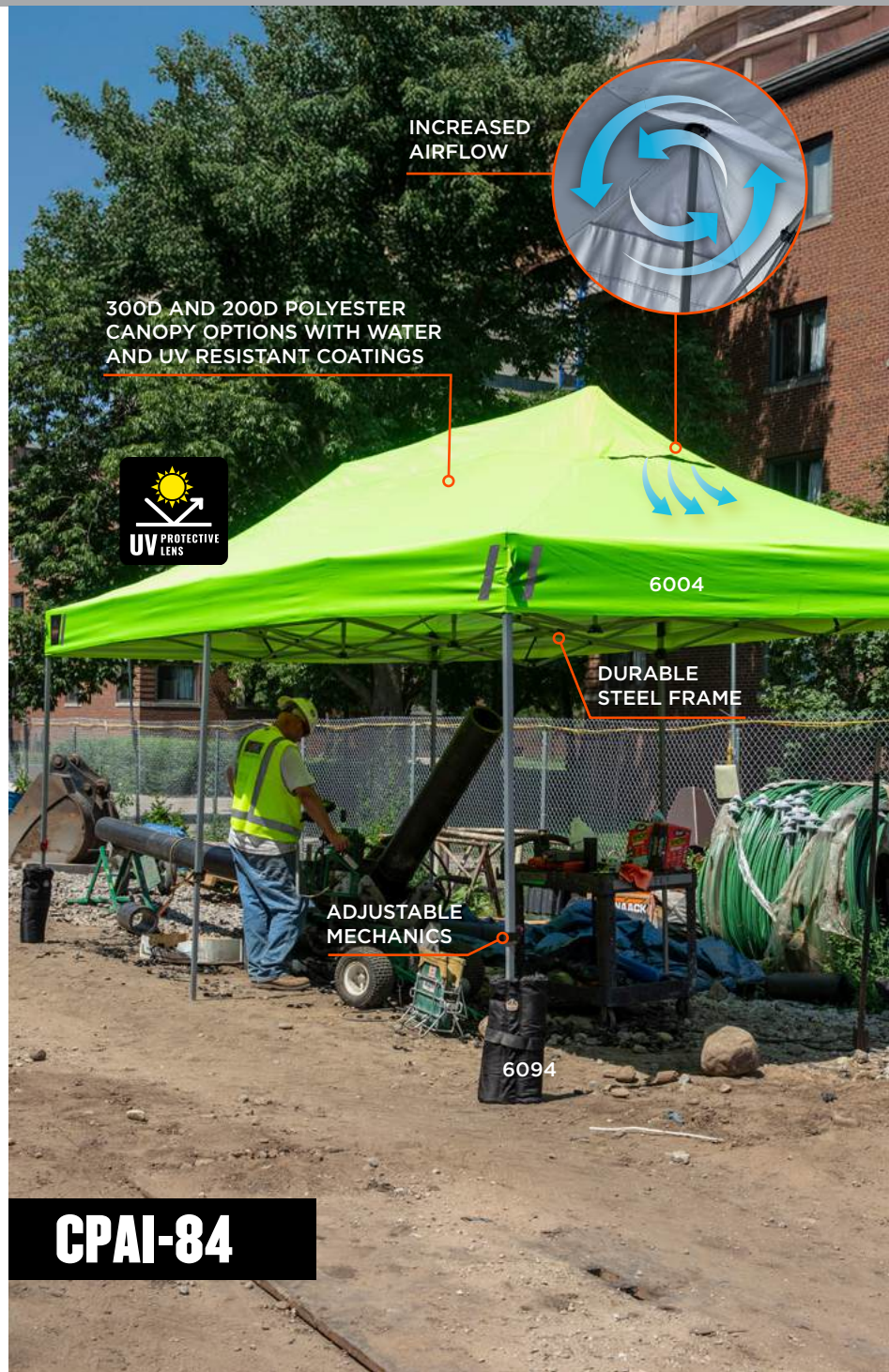


PORTABLE WORK SHELTERS

The sun—our neighborhood star and the basis of all life on earth. But, some days, our “friend” serves a serious beat down on workers by sapping productivity, dehydrating bodies and burning skin. Well, the cries of “Gimme Shelter” have been heard and SHAX® Portable Work Shelters are here to deliver.



6004
HEAVY-DUTY POP-UP TENT -
10FT X 20FT



CPAI-84

SHAX SHELTER PALLET PRICING SAVE UP TO 25%



**BUY IN BULK
AND SAVE BIG!**

6002: 20 QTY. PALLET AVAILABLE
6001: 25 QTY. PALLET AVAILABLE
6004: 10 QTY. PALLET AVAILABLE



6002
HEAVY-DUTY POP-UP TENT -
10FT X 10FT



6001
LIGHTWEIGHT POP-UP TENT -
10FT X 10FT



6001



6055
HEAVY-DUTY POP-UP TENT KIT -
10FT X 10FT (INCLUDES 1 TENT, 2 STANDARD
SIDEWALLS, 2 40LB WEIGHT BAGS AND 1 LARGE
WHEELED STORAGE BAG)



6056
HEAVY-DUTY POP-UP TENT KIT + MESH
WINDOWS - 10FT X 10FT (INCLUDES 1 TENT, 2
SIDEWALLS WITH MESH WINDOWS, 2 40LB WEIGHT
BAGS AND 1 LARGE WHEELED STORAGE BAG)



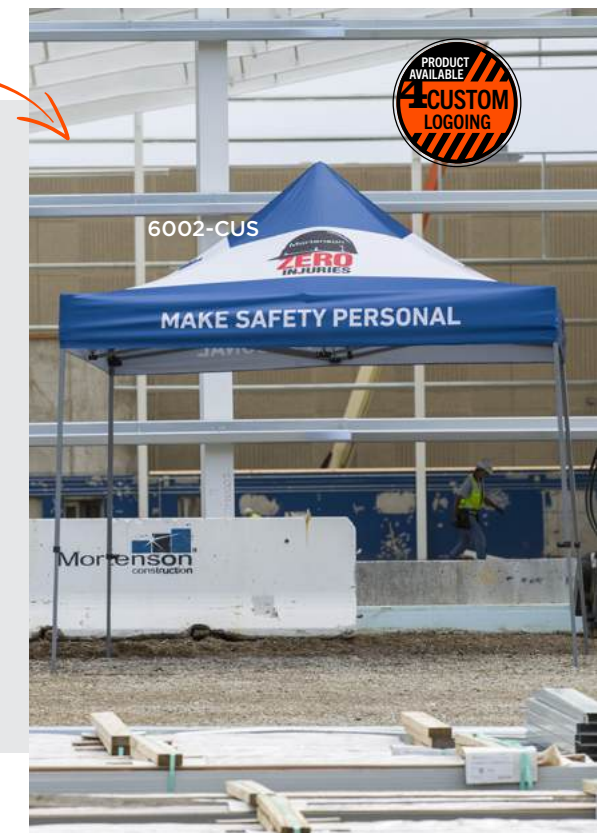
6057
ENCLOSED POP-UP TENT KIT -
10FT X 10FT (INCLUDES 1 TENT, 1 ZIPPERED SIDE-
WALL, 3 STANDARD SIDEWALLS, 2 40LB WEIGHT
BAGS AND 1 LARGE WHEELED STORAGE BAG)

6001-CUS + 6002-CUS 10 X 10 CUSTOM BRANDED TENT

- Complete custom tent canopies with full-color wide dye sublimation
- No color limitations - entire canopy & valance printing capabilities

Rep your company, charity or team by customizing our SHAX® 10x10 with a unique logo, pattern or slogan. Visit ergodyne.com/custom-tents for more info, including artwork requirements and pricing quotes.

**Only available on Shax® 6001 and 6002 model*



6002-CUS

PORTABLE WORK SHELTERS



6001C
REPLACEMENT POP-UP TENT CANOPY - 10FT X 10FT



6004C
REPLACEMENT POP-UP TENT CANOPY - 10FT X 20FT



6196
10' POP-UP TENT SIDEWALL WITH ZIPPER - 10FT X 10FT TENT



6002C
REPLACEMENT POP-UP TENT CANOPY - 10FT X 10FT



6058
10' POP-UP TENT SIDEWALL KIT - 10FT X 10FT TENT (INCLUDES 1 ZIPPERED SIDEWALL AND 3 STANDARD SIDEWALLS)



6197
20' POP-UP TENT SIDEWALL - 10FT X 20FT TENT



6194
10' POP-UP TENT SIDEWALL - 10FT X 10FT TENT



6195
10' POP-UP TENT SIDEWALL WITH MESH WINDOW - 10FT X 10FT TENT



6094
TENT WEIGHT BAGS - 2-PACK



6192
UMBRELLA GROUND SPIKE



6100
LIGHTWEIGHT WORK UMBRELLA



6193
UMBRELLA TRAILER HITCH MOUNT



6199
LIGHTWEIGHT WORK UMBRELLA AND STAND KIT (INCLUDES 1 UMBRELLA AND 1 UMBRELLA STAND)



6002B
REPLACEMENT 10FT X 10FT TENT STORAGE BAG



6190
UMBRELLA STAND



6004B
REPLACEMENT 10FT X 10FT TENT STORAGE BAG



COOLING PPE

BEYOND WATER. REST. SHADE.

Along with the biggies of water, rest and shade, experts recommend cooling PPE as a simple way to maintain safe body and skin temps throughout the shift.

FIND YOUR CHILL: ergo.zone/coolingtech >>>

CHILL-ITS COOLING TECHNOLOGIES: THE [RE]BIRTH OF COOL

Cutting-edge tech transports sweet relief light years beyond frozen washcloths and clunky ice packs.



What cooling gear is right for me?



WET EVAPORATIVE TECHNOLOGY

HOW IT WORKS

Similar to sweat, advanced tech such as PVA, microfiber and polymers draw heat away from the body to keep you cooler longer.

BEST FOR

Hot and dry outdoor environments with low/moderate humidity and sufficient airflow.

COOLING TIME

Up to four hours.

HOW TO ACTIVATE

Run or soak in water for between 1-5 minutes (depending on technology).



DRY EVAPORATIVE TECHNOLOGY

HOW IT WORKS

Gradually releases water via evaporation from the inside out to keep you comfortably cool and dry.

BEST FOR

Hot and dry outdoor environments with low humidity and sufficient airflow.

COOLING TIME

Up to three days.

HOW TO ACTIVATE

Fill with 13-17oz of water.



PHASE CHANGE TECHNOLOGY

HOW IT WORKS

Low-bulk charge packs maintain constant 64°F (18°C).

BEST FOR

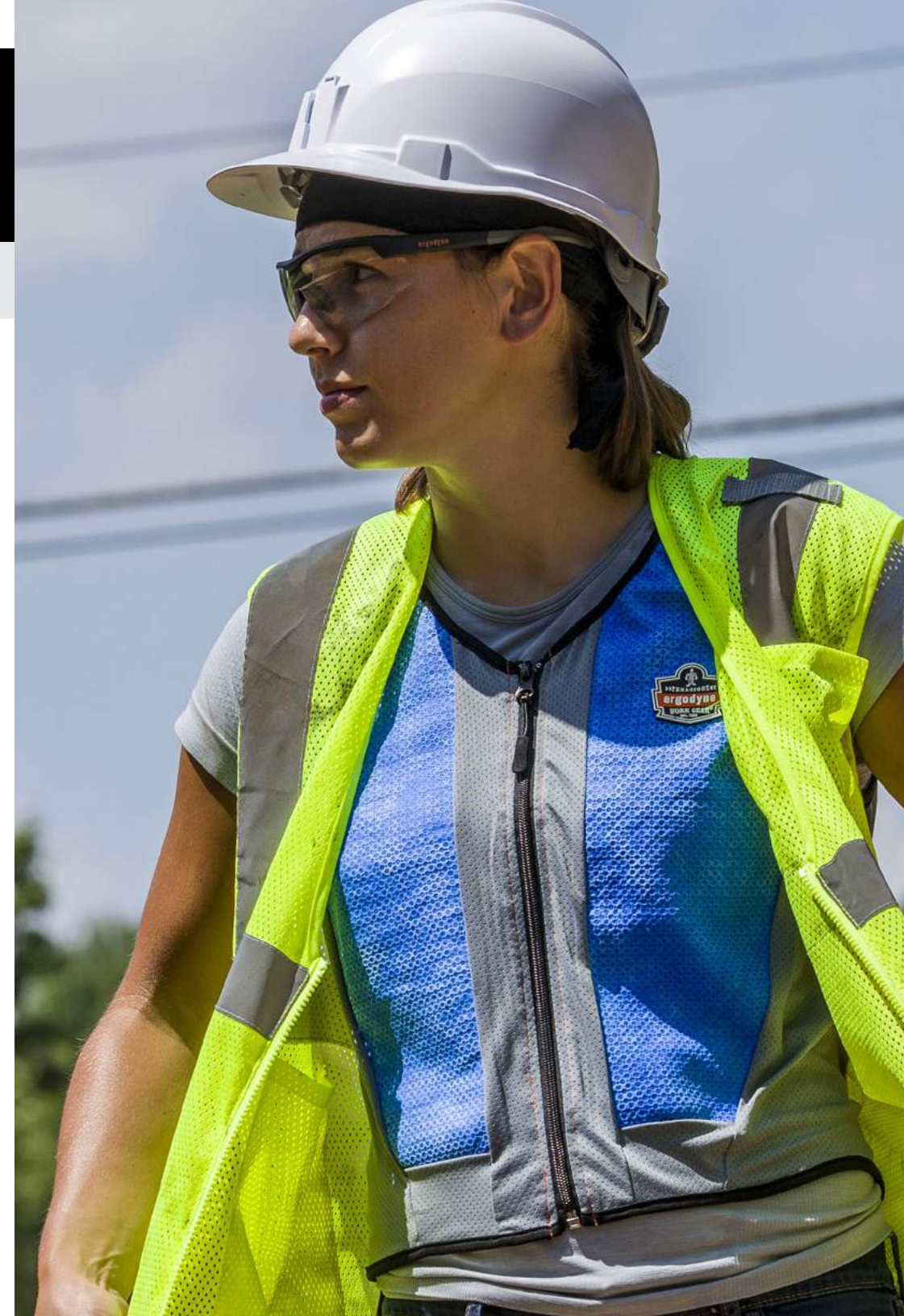
Hot indoor environments (no airflow required, indoors and under other layers).

COOLING TIME

Two to four hours (depending on type of vest).

HOW TO ACTIVATE

Place in cooler of ice water, freezer, refrigerator or near air conditioner for between 5-60 minutes (depending on method).



YOU NEED COOLIN' . . .

The foremost heat stress hot shots agree: OSHA's Water, Rest and Shade Guidelines are really just the start.

“ Body cooling is one of the most underutilized strategies. If [workers] have some sort of body cooling such as vests... that is going to be huge [in helping] them tolerate the heat. ”

- Maggie Morrissey, Director, Korey Stringer Institute, Laborer Division via Radio Free Tenacity podcast



Expert advice on eliminating heat-related illness and injury

Listen now!

SHIRTS + SLEEVES

Cool threads, man. Cover up, cool down and work smart with Chill-Its® Cooling Shirts and Sleeves—the frostiest UV-blocking, core-cooling, sweat-sopping fashion statement under the sun.

6691
COOLING ARM SLEEVES - PERFORMANCE KNIT - PAIR
SIZING: M-2XL

UPF 50+
MOISTURE WICKING
ANTI-ODOR TREATMENT
MACHINE WASHABLE

BOX-HANDLING GRIP

PRODUCT AVAILABLE
4 CUSTOM LOGGING



6500
WRIST SWEATBAND - TERRY CLOTH - PAIR



6691
COOLING ARM SLEEVES - PERFORMANCE KNIT - PAIR
SIZING: M-2XL

6688
COOLING LONG SLEEVE SUN SHIRT WITH UV PROTECTION - TYPE R, CLASS 2
SIZING: S-3XL

MACHINE WASHABLE
ANTI-ODOR TREATMENT
UPF 50+
MOISTURE WICKING

BREATHABLE MATERIAL
LIGHTWEIGHT

MESH PANELING ON BACK AND UNDERARMS FOR A BREATHABLE FIT

CAN BE WORN WET OR DRY



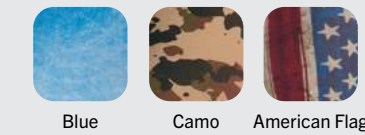
6689
COOLING LONG SLEEVE SUN SHIRT WITH UV PROTECTION
SIZING: S-3XL



6688
COOLING HI-VIS SUN SHIRT WITH UV PROTECTION - TYPE R, CLASS 2
SIZING: S-3XL



6695
SUN PROTECTION ARM SLEEVES - PAIR
SIZING: M/L & XL/2XL



6690
COOLING ARM SLEEVES - PERFORMANCE KNIT - PAIR
SIZING: M-2XL



COOLING VESTS

When the gig flips you from frying pan to fire, Chill-Its® Cooling Vests keep you cool to the core. Choose from dry evaporative, wet evaporative and phase change technologies for heavenly relief in any hellscape, indoors or out.



6685
DRY EVAPORATIVE COOLING VEST - ZIPPER CLOSURE
SIZING: M-4XL



6684
DRY EVAPORATIVE COOLING VEST - ELASTIC WAIST
SIZING: XS, S/M, L/XL, 2XL/3XL



6665
EVAPORATIVE COOLING VEST - EMBEDDED POLYMERS, ZIPPER CLOSURE
SIZING: M-3XL



6667
WET EVAPORATIVE COOLING VEST - PVA, ZIPPER CLOSURE
SIZING: M-5XL



6668
HI-VIS SAFETY COOLING VEST - TYPE R, CLASS 2 - EMBEDDED POLYMERS, ZIPPER CLOSURE
SIZING: S-2XL



6215
PREMIUM FR PHASE CHANGE COOLING VEST WITH RECHARGEABLE ICE PACKS - 6225 WITHOUT ICE PACKS
SIZING: S/M & L/XL



6230
STANDARD PHASE CHANGE COOLING VEST WITH RECHARGEABLE ICE PACKS - 6235 WITHOUT ICE PACKS
SIZING: S/M & L/XL



6260
LIGHTWEIGHT PHASE CHANGE COOLING VEST WITH RECHARGEABLE ICE PACKS - 6255 WITHOUT ICE PACKS
SIZING: S/M-2XL/3XL



6240
PHASE CHANGE COOLING VEST ELASTIC EXTENDERS



6250
RECHARGEABLE PHASE CHANGE ICE PACKS FOR LIGHTWEIGHT COOLING VEST - 4-PACK



6220
RECHARGEABLE PHASE CHANGE ICE PACKS FOR COOLING VEST - 2-PACK
SIZING: S/M & L/XL



ACTIVATED VEST MAINTAINS TEMP OF 64°F (18°C) FOR UP TO 2 HOURS



6210
PHASE CHANGE COOLING ICE VEST
SIZING: OS

COOLING TOWELS

Feel like a human salt lick lately? Chill-Its® Cooling Towels use evaporative technology to instantly transform sweat and water into hours of sweet cooling relief. It's not magic, it's science!

COOLING TOWEL COLORS

*Note: All colors not necessarily available in all styles. See specific product for listing.

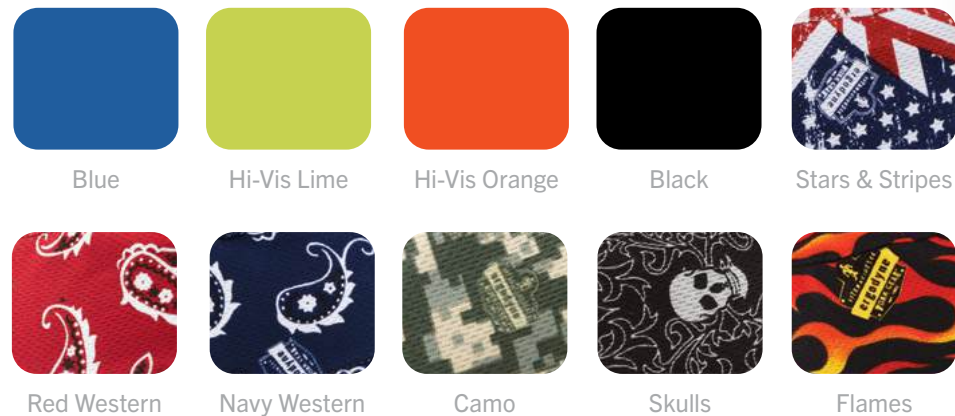


COOLING HATS

It's time to let cooler heads prevail. Chill-Its® Cooling Hats sop up sweat to turn hot n' bothered into heat-beating happiness—because keeping your cool (and keeping perspiration out of your eyes) is not only smart, it's safe.

CHILL-ITS® COLORS & PATTERNS

*Note: All colors not necessarily available in all styles. See specific product for listing.



WET TO ACTIVATE EVAPORATIVE INTERIOR

360° MESH VENTING

8935CT



8934
RANGER HAT WITH NECK SHADE
SIZING: S/M & L/XL



8935CT
HI-VIS RANGER SUN HAT - PVA COOLING
SIZING: S/M-2XL/3XL



8935MF
HI-VIS RANGER SUN HAT - MICROFIBER COOLING
SIZING: S/M-2XL/3XL



8936
LIGHTWEIGHT RANGER HAT - MESH PANELING
SIZING: S/M & L/XL



8937
PERFORMANCE COOLING BASEBALL HAT



8939
COOLING BUCKET HAT



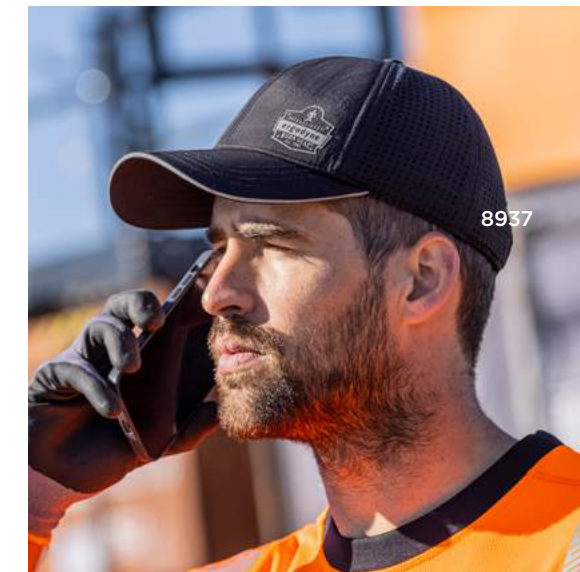
6650
HIGH-PERFORMANCE COOLING HAT AND NECK SHADE



6630
HIGH-PERFORMANCE SKULL CAP - TERRY CLOTH SWEATBAND



6632
COOLING SKULL CAP - PERFORMANCE KNIT



COOLING HEADBANDS + BANDANAS

When it feels like your gray matter is being brought to a boil, Chill-Its® Cooling Headbands and Bandanas are the simple solution for mind-blowing comfort. Soak in water, slap it on your head, and BAM. Instant brain freeze with every breeze.



6702
COOLING BANDANA - POLYMER EMBEDDED BATTING MATERIAL, TIE CLOSURE



6700
EVAPORATIVE COOLING BANDANA HEADBAND - POLYMERS, TIE CLOSURE



6700CT
EVAPORATIVE COOLING BANDANA HEADBAND - PVA, TIE CLOSURE



6700FR
EVAPORATIVE FR COOLING BANDANA HEADBAND - POLYMERS, TIE CLOSURE



6705
EVAPORATIVE COOLING BANDANA HEADBAND - POLYMERS, HOOK AND LOOP



6705CT
EVAPORATIVE COOLING BANDANA HEADBAND - PVA, HOOK AND LOOP



6605
HIGH-PERFORMANCE HEADBAND - TERRY CLOTH SWEATBAND



6550
HEAD SWEATBAND - TERRY CLOTH



6634
COOLING HEADBAND - PERFORMANCE KNIT



6615
HIGH-PERFORMANCE BANDANA DO RAG - TERRY CLOTH SWEATBAND



6710CT
EVAPORATIVE COOLING BANDANA TRIANGLE HAT - PVA, TIE CLOSURE



6710
EVAPORATIVE COOLING BANDANA TRIANGLE HAT - POLYMERS, TIE CLOSURE



6710FR
EVAPORATIVE FR COOLING BANDANA TRIANGLE HAT - POLYMERS, TIE CLOSURE

COOLING MULTI-BANDS + GAITERS

Head, neck, wrists . . . target key cooling zones with a charge of chill, cover up exposed skin and soak up the sweat before it blurs your view of a job well done.



Wear it as a face mask, headband, neck gaiter, do rag and more—adaptability is woven into the very fabric of every Chill-Its® Multi-Band.



6485
MULTI-BAND



MULTI-BAND COLOR & PATTERN AVAILABILITY:



6493FR
FR COOLING NECK GAITER



6486
FR MULTI-BAND



6487R
REFLECTIVE COOLING MULTI-BAND - PERFORMANCE KNIT



6482
COOLING NECK GAITER BANDANA WITH RECHARGEABLE PHASE CHANGE PACKS - 6483 WITHOUT PACK - 6283 PACK ONLY
SIZING: S/M & L/XL



Phase change pack easily activates in ice water (5 min), freezer (9 min) or refrigerator (12 min)



6487
COOLING MULTI-BAND - PERFORMANCE KNIT



6489
2-LAYER COOLING MULTI-BAND - PERFORMANCE KNIT
SIZING: S/M-2XL/3XL

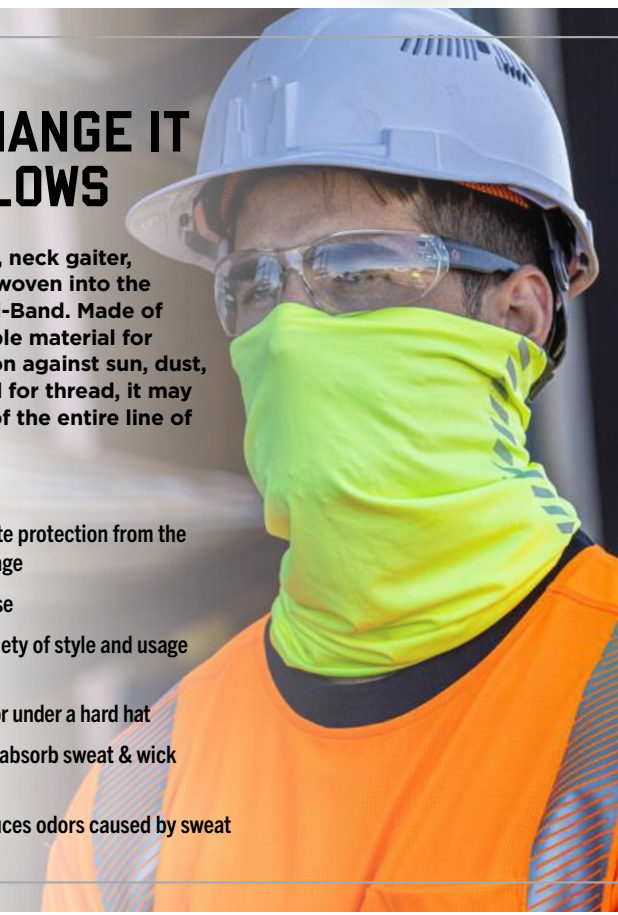


MULTI-BAND CHANGE IT AS THE WIND BLOWS

Wear it as a face mask, headband, neck gaiter, do rag and more—adaptability is woven into the very fabric of every Chill-Its® Multi-Band. Made of soft, stretchable, machine-washable material for comfortable, breathable protection against sun, dust, debris, droplets and more. Thread for thread, it may be the hardest working member of the entire line of Tenacious Work Gear®.

FEATURES

- BLOCKS WIND, SUN & DUST – Ultimate protection from the elements and comfortable face coverage
- MACHINE WASHABLE – For clean re-use
- MULTIPLE WAYS TO WEAR – Wide variety of style and usage configurations
- LOW-PROFILE – Can be worn by itself or under a hard hat
- MOISTURE-WICKING – When dry, will absorb sweat & wick moisture away
- ANTI-MICROBIAL TREATMENT – Reduces odors caused by sweat



COOLING HARD HAT ACCESSORIES

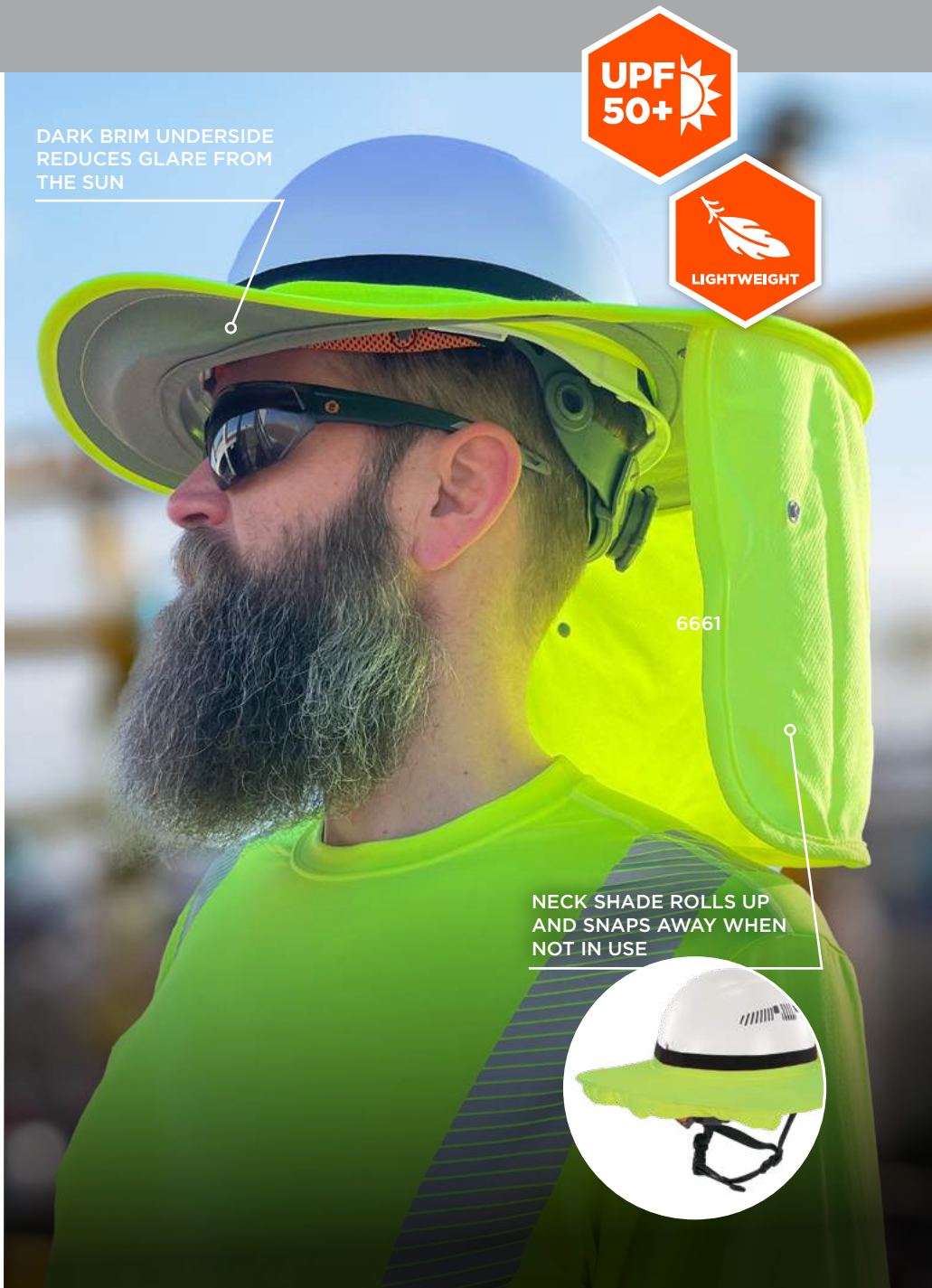
Hard hat heat can take a hike. Chill-Its® Cooling Hard Hat Liners, Shades and Sweatbands seamlessly integrate into hard hat and safety helmet suspensions to prove that cool and compliant don't have to be mutually exclusive.



6717CT
EVAPORATIVE COOLING HARD HAT LINER PAD AND NECK SHADE - PVA



6717CT



DARK BRIM UNDERSIDE REDUCES GLARE FROM THE SUN

UPF 50+

LIGHTWEIGHT

NECK SHADE ROLLS UP AND SNAPS AWAY WHEN NOT IN USE

6661



WATER + AIR = ACTIVATED COOLING HEADWEAR



6660
HARD HAT BRIM AND NECK SHADE



6661
UNIVERSAL HARD HAT BRIM WITH NECK SHADE



6662
UNIVERSAL FR HARD HAT BRIM WITH NECK SHADE



6609
HARD HAT SWEATBAND LINER - TERRY CLOTH



6612
MOISTURE-WICKING HARD HAT TOP PAD (3-PACK)



6613
MOISTURE-WICKING HARD HAT RATCHET PAD (3-PACK)



6611
MOISTURE-WICKING HARD HAT SWEATBAND (3-PACK)



6614
MOISTURE-WICKING HARD HAT PAD KIT



6716
EVAPORATIVE COOLING HARD HAT LINER - POLYMERS



6715 // 6715CT
EVAPORATIVE HARD HAT COOLING PAD - POLYMERS OR PVA



6670CT
EVAPORATIVE COOLING HARD HAT NECK SHADE - PVA

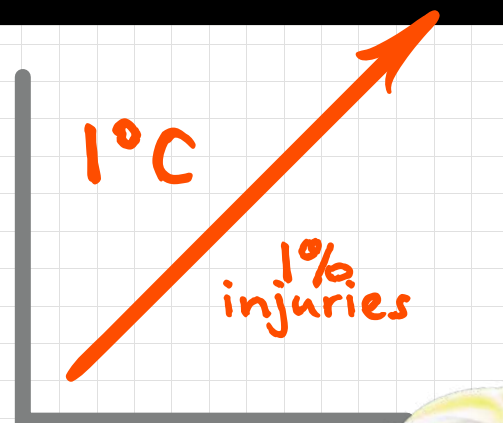


6717 // 6717FR
EVAPORATIVE COOLING FR HARD HAT LINER PAD AND NECK SHADE - POLYMERS

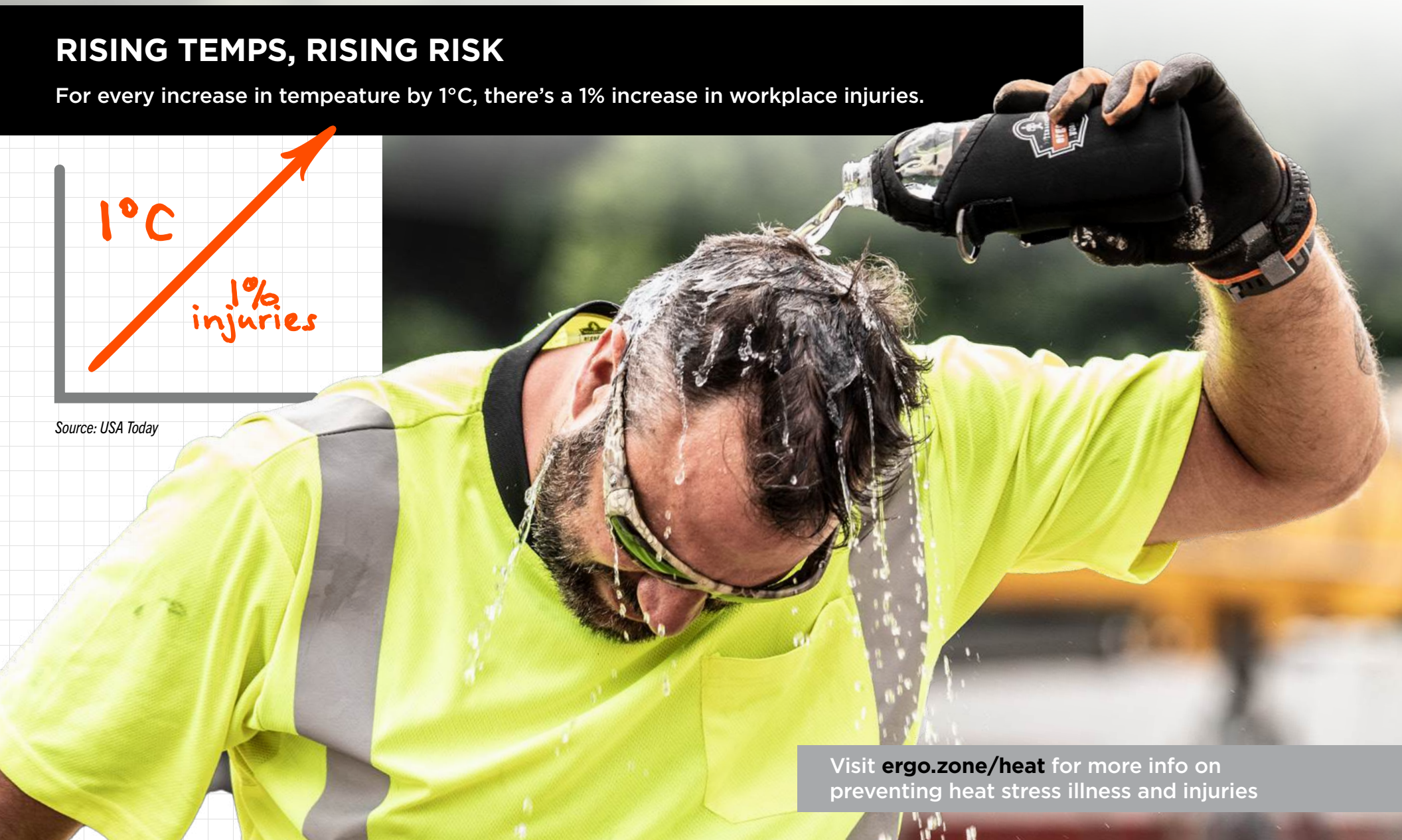
HEAT STRESS ILLNESS + INJURIES

RISING TEMPS, RISING RISK

For every increase in temperature by 1°C, there's a 1% increase in workplace injuries.



Source: USA Today

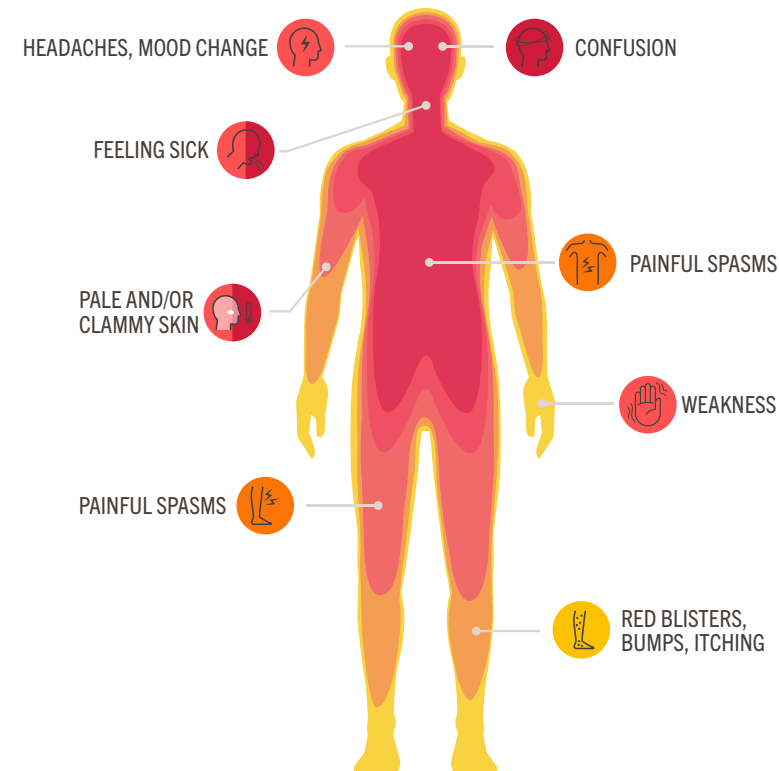


Visit ergo.zone/heat for more info on preventing heat stress illness and injuries

HOW HEAT STRESS HAPPENS

- 1 Body's means of controlling its internal temperature starts to fail
- 2 Once body temps reach 99.7°F (37.6°C), heat stress has begun to affect the body
- 3 Severe illness occurs when body temperature reaches 104°F (40°C)

HEAT STRESS ILLNESSES



HEAT RASH

HOW IT HAPPENS: Sweat ducts become clogged & sweat can't get to the surface of the skin

HOW TO TREAT IT: Keep the skin dry & rest in a cool place

HEAT CRAMPS

HOW IT HAPPENS: Salt & moisture levels are depleted through excessive perspiration

HOW TO TREAT IT: Move to a cool, shaded area, apply something cool, drink plenty of fluids

HEAT EXHAUSTION

HOW IT HAPPENS: Prolonged exposure to high temps & poor hydration

HOW TO TREAT IT: Move to a cool, shaded area, apply something cool, drink fluids & monitor

HEAT STROKE

HOW IT HAPPENS: When the body becomes unable to control its core body temp

HOW TO TREAT IT: Seek medical attention immediately

HEAT STRESS INJURIES

“ Hazardous heat can impair job tasks related to complex cognitive function and also reduce decision-making abilities and productivity. Additionally, a growing body of evidence has demonstrated that these heat-induced impairments may result in significant occupational injuries that are not currently factored into assessments of the health hazards resulting from occupational heat exposure. ”

From *Heat Injury and Illness Prevention in Outdoor and Indoor Work*, Occupational Safety and Health Administration (OSHA)

HEAT STRESS STANDARDS



OSHA's National Emphasis Program (NEP) for Heat is the agency's first nationwide enforcement measure to protect millions of outdoor and indoor workers from the increasing threat of heat-related illness.

Building upon their ongoing initiatives, the NEP greenlights OSHA to conduct heat-related inspections on high-risk worksites while encouraging protective measures such as training, acclimatization procedures, and access to water, rest and shade.

TARGETED INDUSTRIES: CONSTRUCTION

- Residential + Commercial Building
- Utilities
- Roadwork
- Civil Engineering
- Contractors
- And more

TARGETED INDUSTRIES: NON-CONSTRUCTION

- Manufacturing
- Farming
- Transportation
- Automotive
- Warehousing + Storage
- And more

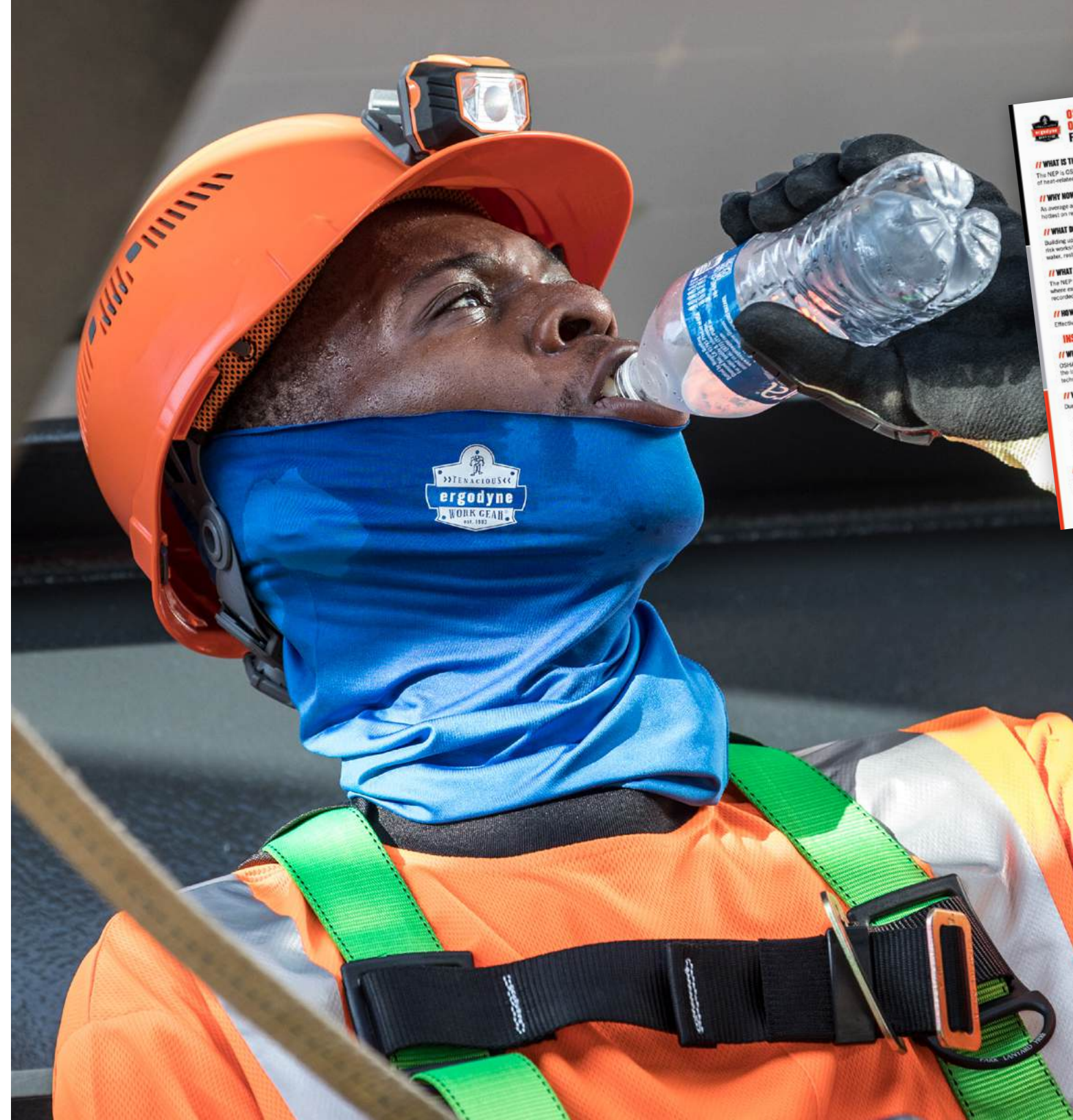
WHAT CAN YOU EXPECT DURING AN OSHA INSPECTION?

DURING INSPECTIONS, COMPLIANCE SAFETY AND HEALTH OFFICERS (CSHOS) WILL:

- ✓ **Review logs and incident reports** for entries indicating heat-related illness, as well as records of heat-related ER visits and ambulance transport.
- ✓ **Interview workers for symptoms of heat-related illnesses**, including headache, dizziness or dehydration.
- ✓ **Review employer's plans for addressing heat exposure** and associated training records. Identify all conditions and activities relevant to heat-related hazards.

When all elements of a violation are established, Area Directors are responsible for issuing citations for hazards under the General Duty Clause. Hazard Alert Letters (HALs) may also be sent.

OSHA



Everything you need to know about the Heat Stress NEP



WHY ERGODYNE

ENHANCE YOUR HEAT-SEEKING CAPABILITIES



We'll help you target risk, plan your attack and deploy the broadest range of heat stress safety solutions available.

INNOVATION



When it comes to worker safety, complacency kills. Which is why we never come to the table without new ideas to share and innovative solutions to add to your safety strategy.

COLLABORATION



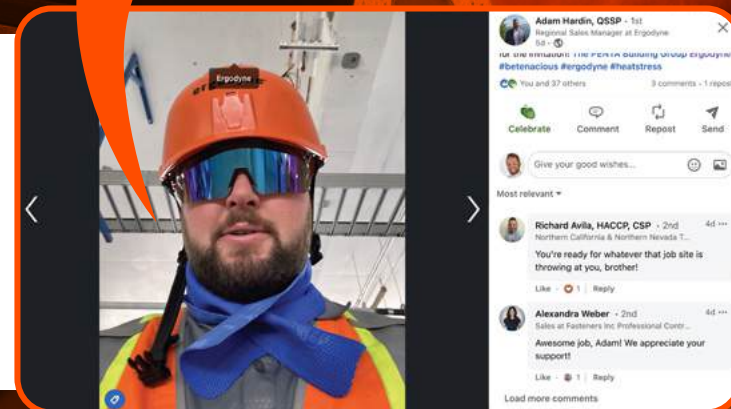
Tenacious Work Gear® is built and tested with worker input. ALWAYS. Because everything we do is driven by a commitment to deeply knowing what work crews are up against, day after day.

EDUCATION



From jobsite risk assessments to policy creation and schooling crews in the proper use of safety gear, we're here to help you and your crew work safer, smarter and just plain better.

No plan? Be a lot cooler if you did.



DEPLOY OUR HEAT STRESS STRIKE FORCE
 QSSP/OSHA 30 certified safety pros ready to size up your heat stress.
support@ergodyne.com | 800 225-8238





INTERGALACTIC HEADQUARTERS:

44° 58' 18.31" N 93° 09' 12.88" W ALT. 934 FT.
1021 BANDANA BOULEVARD EAST
SUITE 220 SAINT PAUL, MN, USA 55108

PHONE 651 642 9889 // 800 225 8238

ERGODYNE.COM

©2026 Tenacious Holdings Inc. All Rights Reserved. All Wrongs Reversed. Ergodyne, Ergoman and design, Ergodyne badge logo, E logo, Tenacious Work Gear, Be Tenacious, Arsenal, Chill-Its, DROP COPS, KREW'D, GloWear, N-Ferno, ProFlex, SHAX, Skullerz, Slips, Squids, Sticky Fingers and TREX are registered trademarks of Tenacious Holdings Incorporated and protected in the U.S. and abroad. AVC, Beverage Extrication Tool, Buddy System, CHILLX, Comfort Hinge, Drops Free Zone, DSX, Fog-Off, Hot Rox, Instrumentation Traps, Make the Workplace a Betterplace, Open-Center Stay, Orange Squad, Power Panel Positioner, Products for Occupational Athletes, QuickCuff, SOLARX, Squad Box, Storm Drains, Team Extreme, Team Tenacious, Tenacious Assault Vehicle, Tenacious Nation, Tenacious Talks, Tenacious Testers, Tenacious Toilet, Tenacious-U, Tena-Grip, Tena-Coat, Tenalux, THE NO BS SPF, Tool Tails, Tool Trap, Workday2Weekend and WSX are trademarks of Tenacious Holdings Incorporated. Trademarks of companies mentioned herein appear for identification purposes only and are the property of their respective companies. All other product names mentioned herein may be trademarks and/or registered trademarks of their respective owners Tenacious Holdings Inc. (dba Ergodyne) is a Klein Tools Company.

ergodyne®

**HEAT STRESS SOLUTIONS:
RELIEF IS CALLING.
BETTER PICK UP.**