



# COLD STORAGE HANDBOOK

**SOLUTIONS, SUPPORT AND OUR COMPLETE COLD STORAGE LINE-UP**




# LIVIN' THE SUB-Z DREAM

In the never-ending winter known as your workday, cold-related illnesses, injuries and mishaps are as relentless as your alarm clock on a Monday morning. But with the right mix of planning, regular breaks to warm up and the proper gear, you'll be livin' the sub-z dream, baby.



## TABLE OF CONTENTS

<b>MICROCLIMATE MASTERY</b>	PG. 3-4
<b>JACKETS</b>	PG. 5-6
<b>BIBS + COVERALLS</b>	PG. 7-8
<b>GLOVES</b>	PG. 9-10
<b>BALACLAVAS, HATS + GAITERS</b>	PG. 11-12
<b>BASE LAYERS</b>	PG. 13-14
<b>HEATED VEST</b>	PG. 15-16
<b>TRACTION + WARMING PACKS</b>	PG. 17-18
<b>UNDERSTANDING TEMPERATURE RATINGS</b>	PG. 19-20
<b>INSULATION LEVELS</b>	PG. 21-22
<b>ACTIVITY LEVELS + TIME DURATION</b>	PG. 23-24
<b>BETTER LIVING THROUGH LAYERING</b>	PG. 25-26

GO ONLINE FOR   
**UP-TO-THE-NANOSECOND**  
UPDATES ON OUR  
COLD STORAGE COLLECTION!

# HEAD TO TOE. LOADING DOCK TO BLAST FREEZER. THIS WAY TO MICROCLIMATE MASTERY...



## BIBS + COVERALLS



## JACKETS



## GLOVES



## BASE LAYERS



## HEATED VESTS



## TRACTION



## WARMING PACKS



## HEADWEAR

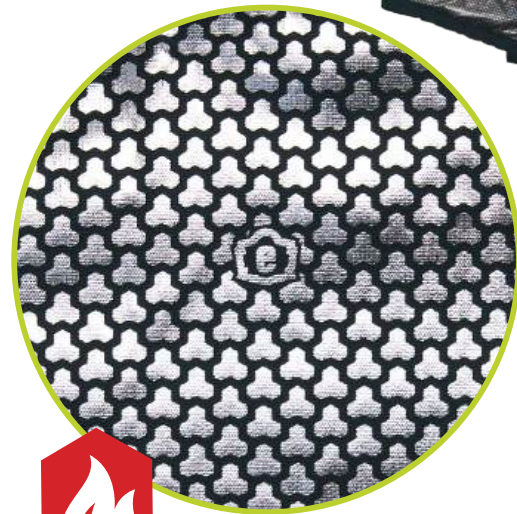


# JACKETS

## FIND THE SILVER LINING IN EVERY WORKDAY

with ampliFIRE™ Heat Reflective Technology

Not every day is a good day. But thanks to ampliFIRE™ heat reflective technology, every day is a warm day. Designed to amp up your body heat by capturing, reflecting and trapping what you create, it's the cozy silver lining in your coldest, cruelest shifts.



**RATED TO  
-60°F  
(-51°C)**

For up to 5 hours of moderate activity\*

HOW DID WE GET THIS NUMBER?

GO TO PAGE 19 TO FIND OUT

**6464**  
AMPLIFIRE™ FREEZER JACKET  
SIZING: XS-5XL



FOREARM GRIPS FOR MORE LIFTING LEVERAGE!



**6474**  
INSULATED COOLER JACKET  
SIZING: XS-5XL

**RATED TO  
-10°F  
(-23°C)**

For up to 5 hours of moderate activity\*



**6476**  
INSULATED FREEZER JACKET  
SIZING: XS-5XL

**RATED TO  
-50°F  
(-46°C)**

For up to 5 hours of moderate activity\*



**6478**  
HI-VIS INSULATED FREEZER JACKET, TYPE R CLASS 2  
SIZING: XS-5XL



**RATED TO  
-50°F  
(-46°C)**

For up to 5 hours of moderate activity\*

# BIBS + COVERALLS

BE FREE!  
DESIGNED FOR FULL  
RANGE OF MOTION



**THIN IS IN.**  
**MORE WARMTH. 30% LESS BULK.**

There's a common misconception that bulkier means better when it comes to staying toasty. But the 3M™ Thinsulate™ Insulation found in our Cold Storage Collection retains more warmth with 30% less bulk AND holds up to more laundry cycles than the generic polyfill used by leading competitors.



RATED TO  
**-50°F**  
(-46°C)

For up to 5 hours of moderate activity\*

**6475**  
INSULATED FREEZER  
COVERALLS  
SIZING: XS-5XL



**6479**  
HI-VIS INSULATED FREEZER BIB  
OVERALLS, CLASS E  
SIZING: XS-5XL



RATED TO  
**-50°F**  
(-46°C)

For up to 5 hours of moderate activity\*



RATED TO  
**-50°F**  
(-46°C)

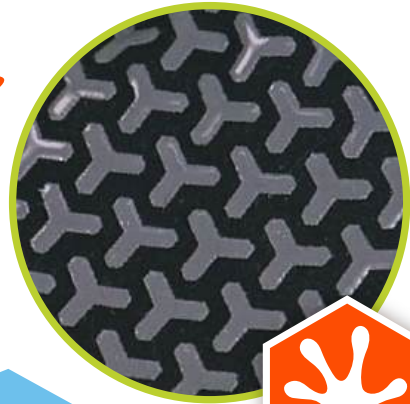
For up to 5 hours of moderate activity\*

**6477**  
INSULATED FREEZER  
BIB OVERALLS  
SIZING: XS-5XL



# GLOVES

SILICONE PATTERNED PALM + FINGERS FOR SECURE GRIP



ANSI/ISEA 105



RATED TO  
**-20°F**  
(-29°C)

**850**  
INSULATED FREEZER GLOVES  
SIZING: 2XS-3XL

For up to 1 hour of moderate activity\*

★★★★★  
"ABSOLUTELY LOVE THESE GLOVES"

"I work in food distribution as a selector in the freezer and spend a lot of time in below zero temps. The grip is great and the touchscreen works amazing with my gear. Highly recommend if you work in temps below zero and need finger dexterity."

- 850 Online Review



DOUBLE-LINED THERMAL PROTECTION



ANSI/ISEA 105



EN388  
2131 X

**7521**  
THERMAL WATERPROOF  
IMPACT GLOVES  
SIZING: XS-2XL



**7402**  
THERMAL KNIT COOLER GLOVES  
SIZING: XS-2XL



EN388  
2131 X

**7501**  
THERMAL COATED  
WATERPROOF GLOVES  
SIZING: S-2XL



EN388  
2131 X

**7401**  
THERMAL COATED  
LIGHTWEIGHT WINTER GLOVES  
SIZING: M-2XL

# BALACLAVAS, HATS + GAITERS

Avoid cold bodies, cold brains, deteriorating performance and disoriented decision-making with thermal headwear. Designed to go beyond the core to protect skin and extremities most vulnerable to frostbite.



★★★★★  
"MUST HAVE"

"Had to go out in some pretty cold days (-17°F)... keeps you warm but the best part is it keeps the wind off your neck."

- 6829 Online Review



**6829**  
RIB KNIT 2-LAYER BALACLAVA  
FACE MASK



**6821**  
FLEECE BALACLAVA FACE MASK



**6821-ECO**  
RECYCLED FLEECE BALACLAVA  
FACE MASK



**6823**  
HINGED BALACLAVA FACE MASK



**6802**  
TRAPPER HAT



**6803**  
REFLECTIVE RIB KNIT WINTER HAT



**6804**  
SKULL CAP WINTER HAT WITH  
LED LIGHTS



**6801**  
WINTER SKULL CAP WITH LED  
RECHARGEABLE LIGHT



**6806**  
CUFFED RIB KNIT WINTER HAT



**6807**  
WINTER BASEBALL CAP  
WITH EAR FLAPS



**6813**  
WINTER SKULL CAP HELMET LINER



**6960**  
FLEECE NECK GAITER



**6981**  
WINTER WARMING KIT

# BASE LAYERS



**6435**  
MIDWEIGHT BASE LAYER  
LONG SLEEVE SHIRT  
SIZING: M-3XL



“Worked perfectly...Kept me warm when I needed it to, and didn't make me sweat the way long johns do. Plus it looks cool as hell. This shirt is honestly one of my favorite pieces of clothing.”

- 6435 Online Review



6480



**6480**  
MIDWEIGHT BASE LAYER PANTS  
SIZING: M-3XL



**6436**  
LIGHTWEIGHT BASE LAYER  
LONG SLEEVE SHIRT  
SIZING: M-2XL



**6481**  
LIGHTWEIGHT BASE LAYER PANTS  
SIZING: M-3XL



**6494**  
THERMAL FREEZER SOCKS  
SIZING: S/M-L/XL

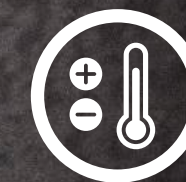
# TAKE THAT, DAD.

Guess who's in control of the thermostat now?

For years, you lived under a strict household decree—no one touches the thermostat but Dad. Well well well... look who's in control now. With three levels of pushbutton heat and a low-profile fit that slides perfectly under your jacket, you get the adjustable warmth (and maybe emotional closure?) you need. So, go ahead. Crank it up. Feels good, doesn't it?



**6495**  
RECHARGEABLE HEATED VEST W/ BATTERY  
POWER BANK - 7.2V/5000MAH  
SIZING: S-4XL



ADJUSTABLE  
HEAT



UP TO 9 HOURS  
OF RUN TIME



RECHARGEABLE  
TAKES 4 HOURS TO  
FULLY CHARGE

★★★★★  
"EXCELLENT  
HEATED VEST!!"

"Fits comfortable under winter jacket and gear. Features 3 heat settings ideal to adapt to different cold conditions. The snug fit helps to keep you warm. Overall great product!!"

- 6495 Online Review

# TRACTION

## MICHELIN TIRES FOR YOUR FEET? YUP. IT'S A THING.

Soup-up your outsoles with the same tire tech that keeps sports cars glued to the road.



**6325**  
SPIKELESS TRACTION DEVICES -  
WINTER CONDITIONS  
SIZING: S-2XL



**6326**  
SPIKELESS TRACTION DEVICES -  
SLIP-RESISTANT & OIL-RESISTANT  
SIZING: S-XL



## MID-SOLE ICE CLEATS

Traction with a twist.

Rotate the studs to the top of boots to preserve floors AND backsides (spikes + hard flooring = slip hazard).

Headed back outside? Just flip to grip with 12 tundra-chomping tungsten carbide spikes.



**6316**  
MID-SOLE ICE CLEATS -  
FLAT SOLE



**6317**  
MID-SOLE ICE CLEATS -  
HEELED BOOT

### TREAD DESIGN

"Block sipings" create additional tread surface area for increased grip on snowy surfaces.

### PRESSURE DISTRIBUTION

Micro-pumps increase adhesion on icy surfaces.

### GROOVE DESIGN

Strategically placed grooves allow for water evacuation when pressure is applied on wet surfaces.

### TREAD PATTERN

Provides constant contact with slippery surfaces

### SCULPTURE DESIGN

Provides adherence and adaptability on various ground conditions

# WARMING PACKS



**6990**  
HAND WARMING PACKS



**6992**  
TOE WARMING PACKS



**6995**  
FOOT WARMING PACKS



**6994**  
ASSORTED WARMING PACK



**6997**  
BODY WARMING PACKS

# UNDERSTANDING THE **TEMPERATURE RATINGS** OF YOUR THERMAL GEAR

RATED TO  
**-°F**  
(-°C)

The truth is, temperature ratings are merely a performance guide, not gospel—the best direction available through exhaustive testing and consideration of **three major factors:**

**Insulation (CLO Value) + Activity (MET Level) + Time (Duration)**

**1**

**INSULATION**  
CLO Value

Insulation performance is measured by CLO rating.

#### WHAT IS CLO VALUE?

Degree of insulation provided by an article of clothing. The higher the CLO, the warmer it is.

**+**

**2**

**ACTIVITY**  
MET Level

When you're moving, you're creating heat.

#### WHAT IS MET LEVEL?

(M)etabolic (E)quivalent of (T)ask is the ratio of your working metabolic rate relative to your resting rate.

**+**

**3**

**TIME**  
Duration

How long are you in the cold?

#### WHAT IS DURATION?

Continuous time spent in the cold.



**UNPACK  
TEMPERATURE  
RATINGS IN  
THERMAL GEAR**



# 1

# INSULATION LEVELS

Measured by CLO

The higher the CLO rating, the warmer the gear will keep you.  
You've gotta factor in activity MET level + time duration, but let's start with CLO first.



Birthday Suit



Standard Down Jacket



850 Ergodyne Freezer Gloves



6474 Ergodyne Cooler Jacket



6475 Ergodyne Freezer Coveralls



6476 Ergodyne Freezer Jacket



6477 Ergodyne Freezer Bibs



6478 Ergodyne Hi-Vis Freezer Jacket



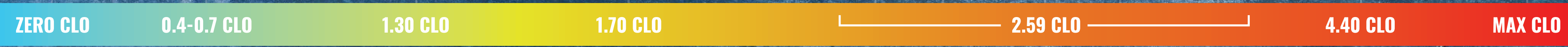
6479 Ergodyne Hi-Vis Freezer Bibs



6464 Ergodyne AmpliFIRE™ Freezer Jacket



Yeti



# 2

## ACTIVITY LEVELS

Measured by MET (Metabolic Equivalent of Task)

When your body is working at a higher metabolic rate, it's creating a lot of heat that will affect your gear's thermal performance. Find the gear that best fits the job:



### MANUAL FACILITY

Workers in a fully manual warehouse would fall into the 3-6 MET ("moderate") range.



This means an increase in thermal performance.



### AUTOMATED FACILITY

Workers in a fully automated warehouse would fall into the 0-3 MET ("low") range.



This means a decrease in thermal performance.

### MANUAL FACILITY

N-Ferno® Freezer Gear



Comfort Rating at 3-6 MET

-50°F for 5 hours

### AUTOMATED FACILITY

N-Ferno® Freezer Gear



Comfort Rating at 0-3 MET

-10°F for 3 hours

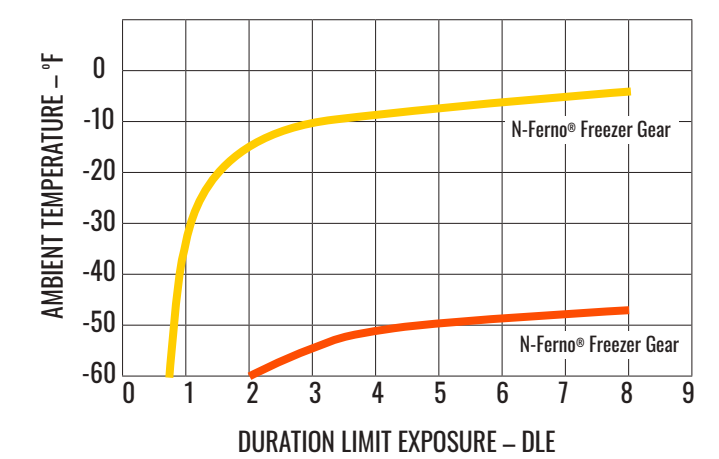


# 3

## TIME DURATION

Thermal performance decreases over time

ACTIVITY LEVEL: MODERATE WORK    ACTIVITY LEVEL: LIGHT WORK



# BETTER LIVING THROUGH LAYERING

No single magic garment can adapt like a proper layering system.

BUILDING A COLD WEATHER LAYERING SYSTEM



## BASE LAYERS

Starting with a moisture-wicking, quick-drying layer is key.



## MID LAYERS

Traps body heat + allows workers to remove or add layers as needed.



## OUTER LAYERS

Durable, breathable layer made to stand up to tough use and provide added warmth.



#### INTERGALACTIC HEADQUARTERS:

44° 58' 18.31" N 93° 09' 12.88" W ALT. 934 FT.  
1021 BANDANA BOULEVARD EAST  
SUITE 220 SAINT PAUL, MN, USA 55108

PHONE 651 642 9889 // 800 225 8238

ERGODYNE.COM

©2025 Tenacious Holdings Inc. All Rights Reserved. All Wrongs Reversed. Ergodyne, Ergoman and design, Ergodyne badge logo, E logo, Tenacious Work Gear, Be Tenacious, Arsenal, Chill-Its, DROP COPS, KREW'D, GloWear, N-Ferno, ProFlex, SHAX, Skullerz, Slips, Squids, Sticky Fingers and TREX are registered trademarks of Tenacious Holdings Incorporated and protected in the U.S. and abroad. AVC, Beverage Extrication Tool, Buddy System, CHILLX, Comfort Hinge, Drops Free Zone, DSX, Fog-Off, Hot Rox, Instrumentation Traps, Make the Workplace a Betterplace, Open-Center Stay, Orange Squad, Power Panel Positioner, Products for Occupational Athletes, QuickCuff, SOLARX, Squad Box, Storm Drains, Team Extreme, Team Tenacious, Tenacious Assault Vehicle, Tenacious Nation, Tenacious Talks, Tenacious Testers, Tenacious Toilet, Tenacious-U, Tena-Grip, Tena-Coat, Tenalux, THE NO BS SPF, Tool Tails, Tool Trap, Workday2Weekend and WSX are trademarks of Tenacious Holdings Incorporated. Trademarks of companies mentioned herein appear for identification purposes only and are the property of their respective companies. All other product names mentioned herein may be trademarks and/or registered trademarks of their respective owners Tenacious Holdings Inc. (dba Ergodyne) is a Klein Tools Company.

**ergodyne®**  
**COLD STORAGE SOLUTIONS:**  
**BUILT FOR YOUR**  
**NEVER-ENDING WINTER**